

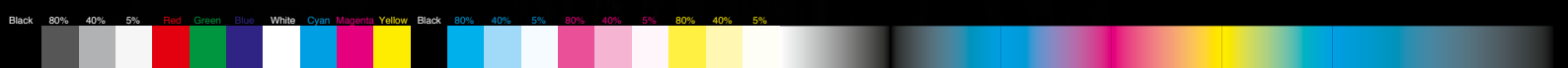
# THE MAGIC LEATHER



## NEW!

- ✓ genuine leather structure
- ✓ scratch-proof
- ✓ good tear resistance
- ✓ odorless
- ✓ better separability
- ✓ better planarity
- ✓ hot foil stampable\*
- ✓ overcoatable\*
- ✓ glueable\*
- ✓ adhesive saving\*

\*see reverse page





**SPECIFICATION**

The TroLEATHER WET is a partially acrylic coated, leather structured, biaxially oriented polypropylene foil; the thickness of the film is 25 µm (± 5 %); the foil can be used for materials of various kinds.

It is suitable for lamination with all commercial adhesives (water based, solvent free, solvent based).

**PROPERTIES OF THE FILM**

1. scratch-proof
2. good tear resistance
3. odorless
4. better separability
5. better planarity
6. adhesive saving (no structure on backside of the film)
7. gluability, printability and hot stamping applications possible in principle, but the structure may make conditions more difficult

**QUALITY**

Each master roll is tested and logged for gloss, surface energy, bonding and coating homogeneity before, during and after the coating process.

The reels have maximum winding and cutting quality.

At the beginning of each production process (change of varnish or film batch), a few meters get laminated and will be reviewed by our quality department.

Slight differences in the color of ready-made rolls can occur throughout the production process, are normal and are only visible on the roll. They have no negative impact on the finished end product.

**SIZE AND PACKAGING**

The films are available in widths from 160 mm to 1,270 mm. Each roll is wound on a 3" (76.2 mm) core and has at least 3,000 running meters on it. For each splice, we deliver 50 extra service meters. The coating is on the outside of the roll.

TYPE	TroLEATHER WET
THICKNESS*	25 µm ± 5 %
WEIGHT*	≈ 16.2 g/m <sup>2</sup>
YIELD*	≈ 61.72 m <sup>2</sup> /kg
FREE SURFACE ENERGY	min. 40.0 mN/m **
GLOSS 60° *	≈ 7.0 ***

\* Values are subject to change.

\*\* Cannot be measured exactly due to uneven structure.

\*\*\* The gloss points are for orientation only due to the uneven structure.